

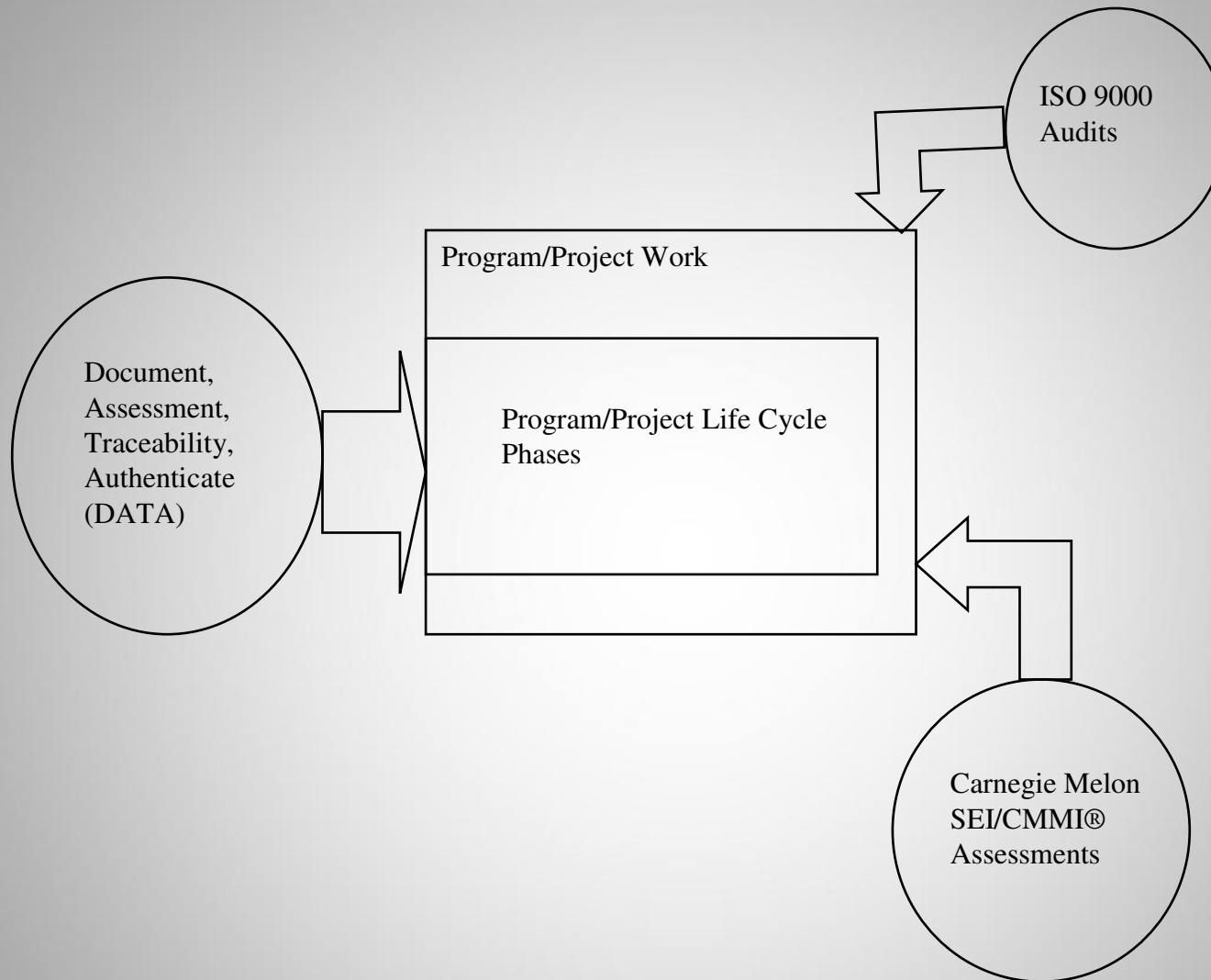
Quality Management System for the 21st Century

By

James L. "Hutch" Hutchins

BSET, MSQA

Over 30 years Quality Engineering



Difference between DATA and ISO or CMMI®

Bread Board
Construction

Brass Board
Construction

Prototype
Production

Full Scale Production

Conceptual

Design

Test

FCA / PCA

Product
Delivery

Block Diagram

Detailed Design
Code

Functional & Integration
Testing

Qualified Software

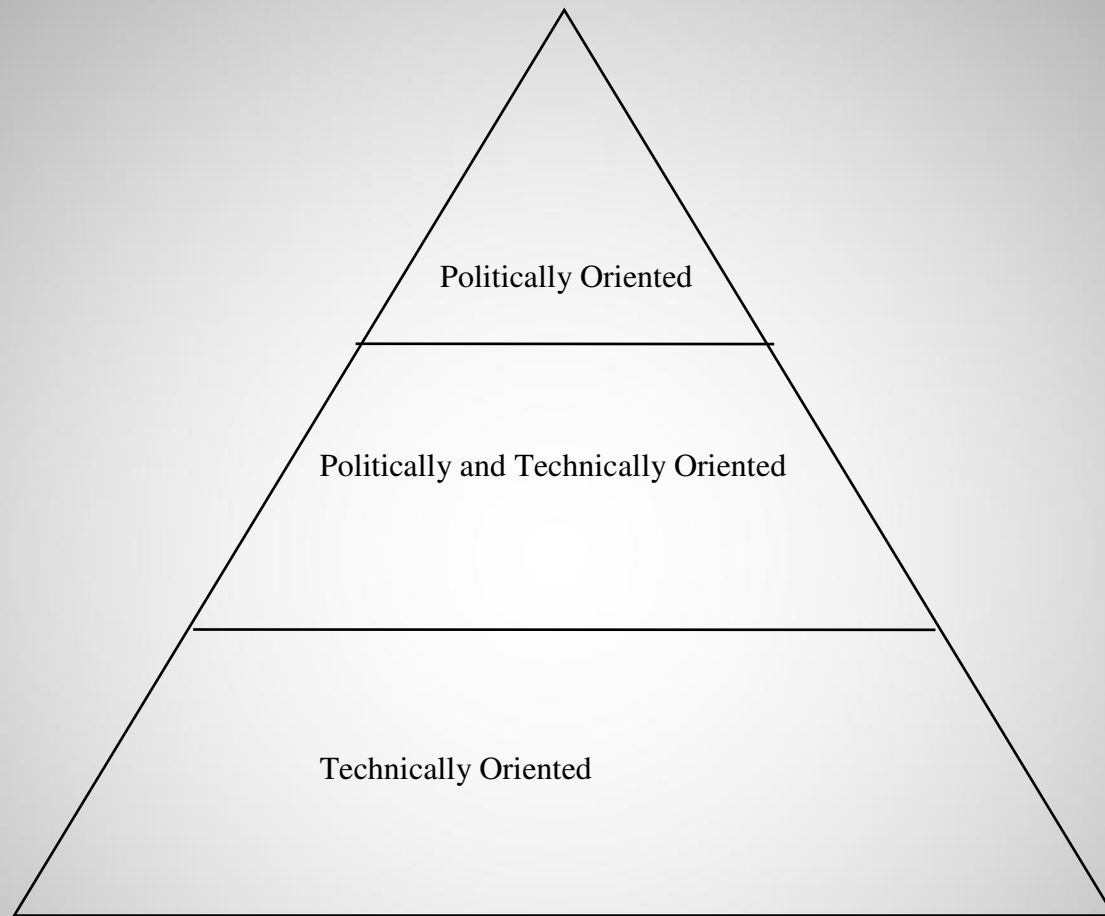
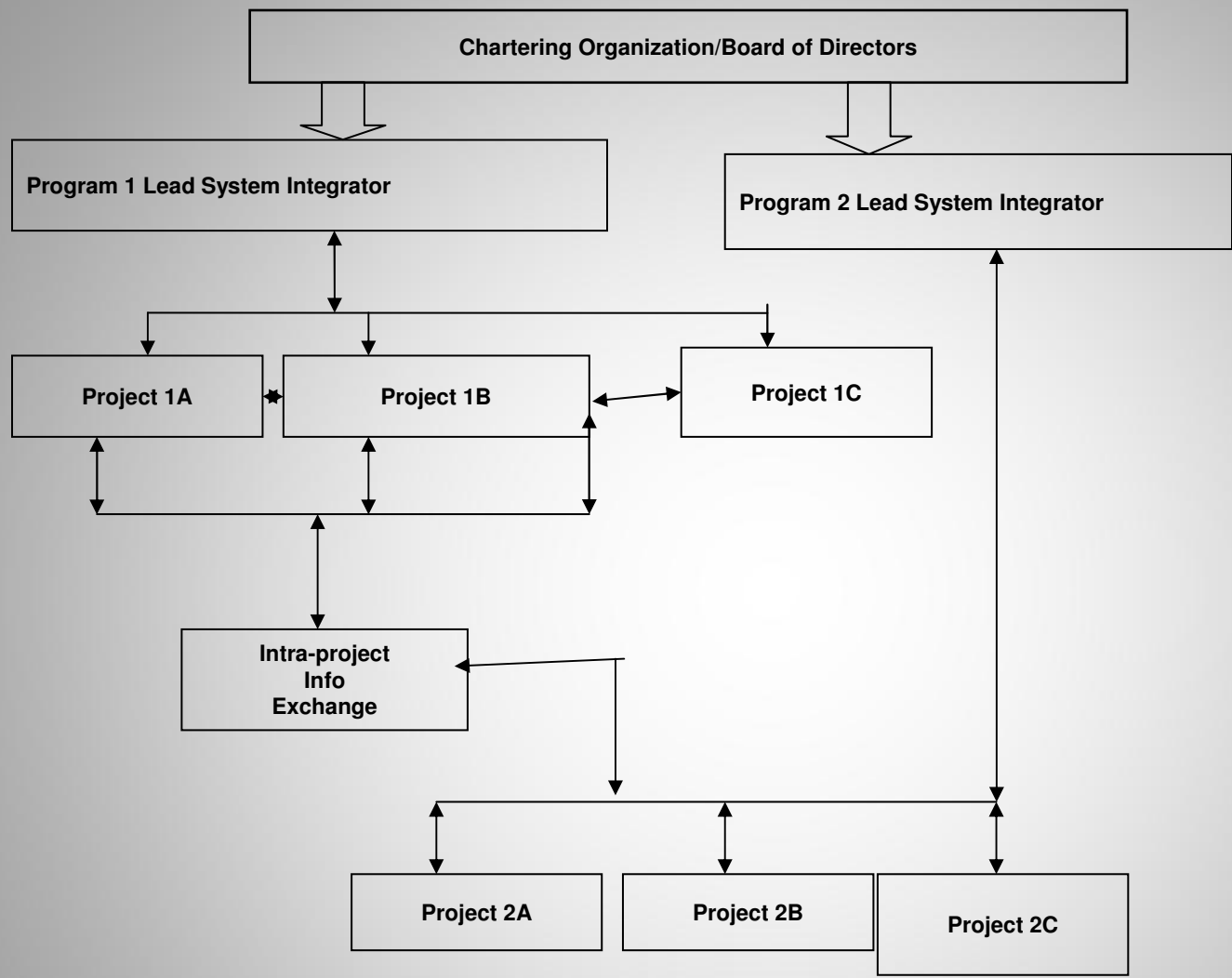


Image of Arsenale management structure

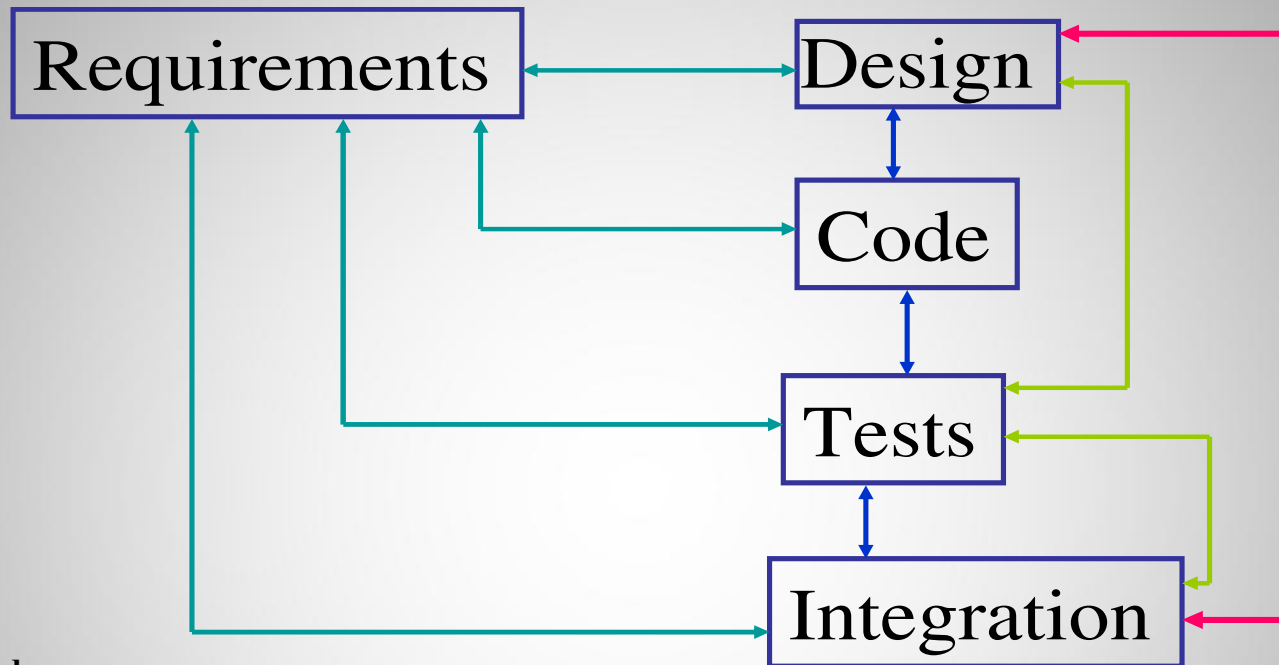
Masaaki Imai, author of *Kaizen: The Key to Japan's Competitive Success*, defines a concept of going to “the place where real actions take place.”

θ_1	θ_2	θ_3	θ_n
Concept	Design	Test	Delivery

Project management life cycles
(Legend θ = phase)



Project or program samples



Legend:

Requirements Connection ———

Qualification Test Connection ———

Integration Test Connection ———

How Traceability Works

Question

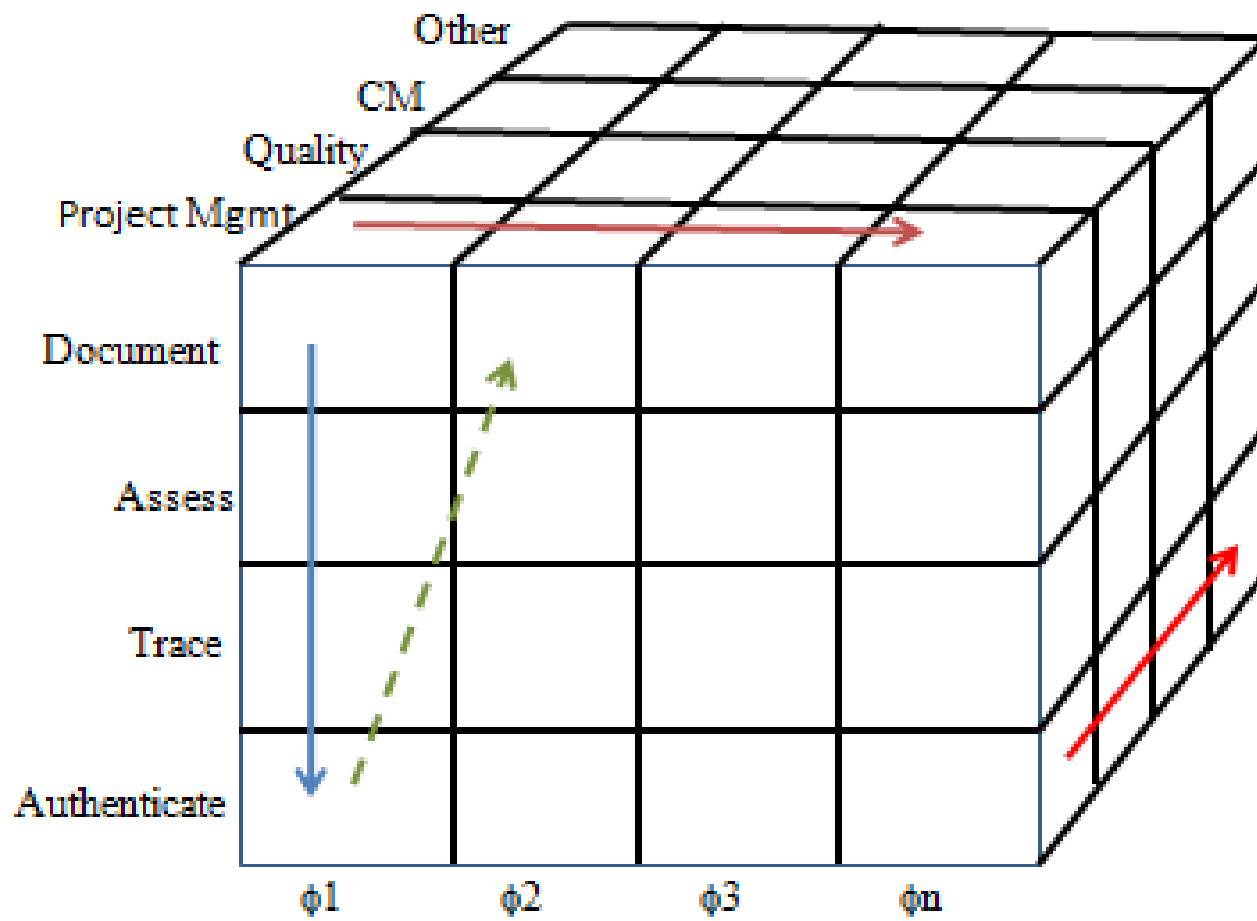
- What is it you plan to functionally perform in the current life cycle phase?
- What is the functional management plan for the project in this life cycle phase?
- How is the project going to conduct testing and be supported by the functional team members?
- With what objective evidence is the project going to show how successful the desired product is complete?

Answer

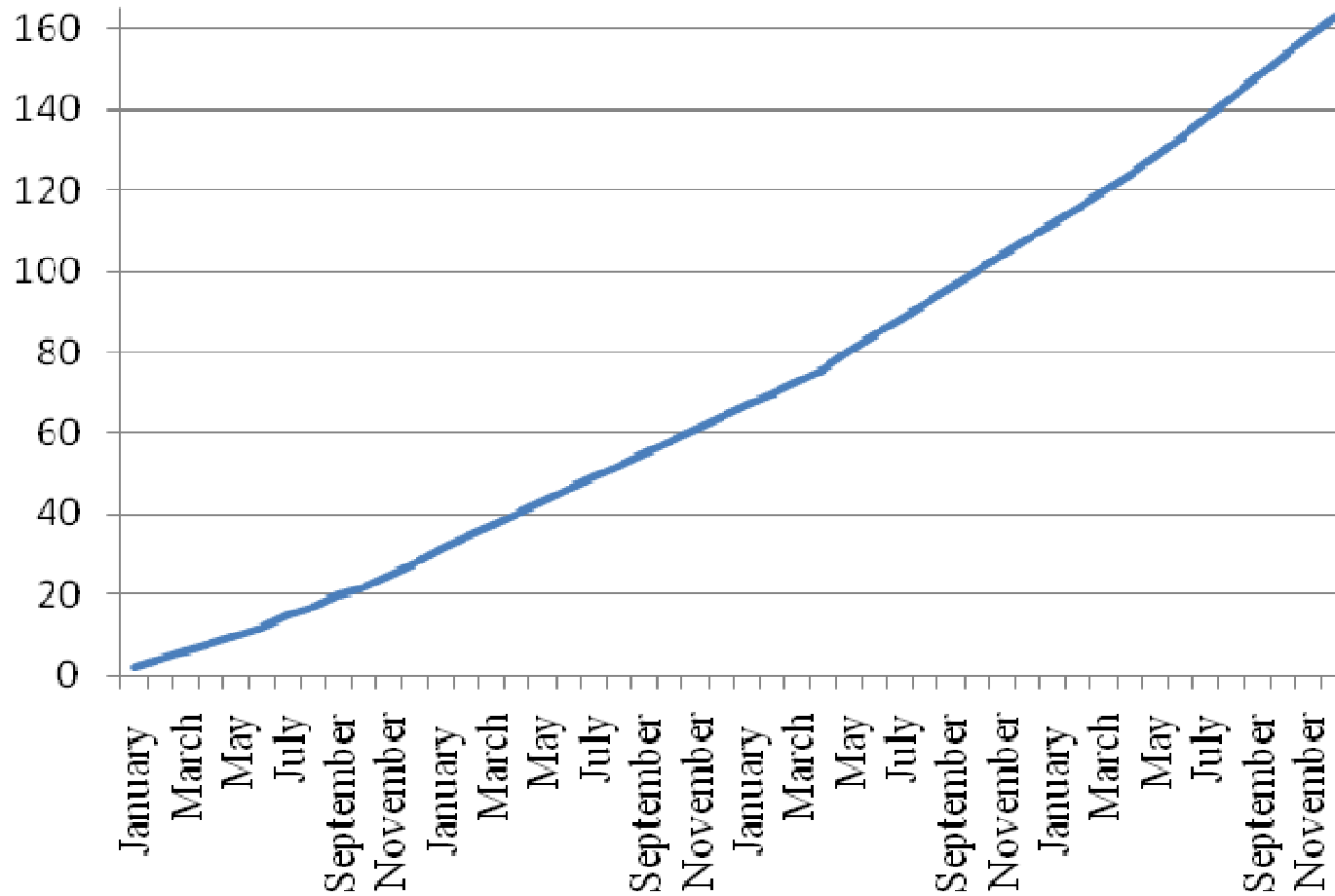
- Each function has a vertical set of information developed for each segment. The information shows the expected actions, product and documentation. It includes the previous life cycle phase deviations/waivers which are pertinent to be addressed during the specific life cycle phase
- Each function has policies, procedures and processes selected and tailored, if necessary, to support the activities necessary during the present life cycle phase.
- The horizontal rose of documentation and tracing should show an appropriate decomposition related to the present life cycle phase. These should have an indication of how the product will be proven in the specific life cycle phase.
- The bottom horizontal set of blocks document the amount of success/failure of how each functional team member(s) participates, it documents what evidence of the production is supportive of the project.

At Each Authentication the Customer has Three (3) Options

- He can accept the present product at this specific life cycle phase
100%
- He can reject the presented product at this specific life cycle phase
100%
- He can Partially accept the product with negotiated Requests for Deviation and/or Waiver to the contract
- **NOTE:** the latter two options require the customer to be specific about his either entirely rejecting or partially accepting the presented product. This would be difficult if during the Assessment segment he agreed to specific items.



Requirement Increase



RDW Decrease vs Profit Increase

